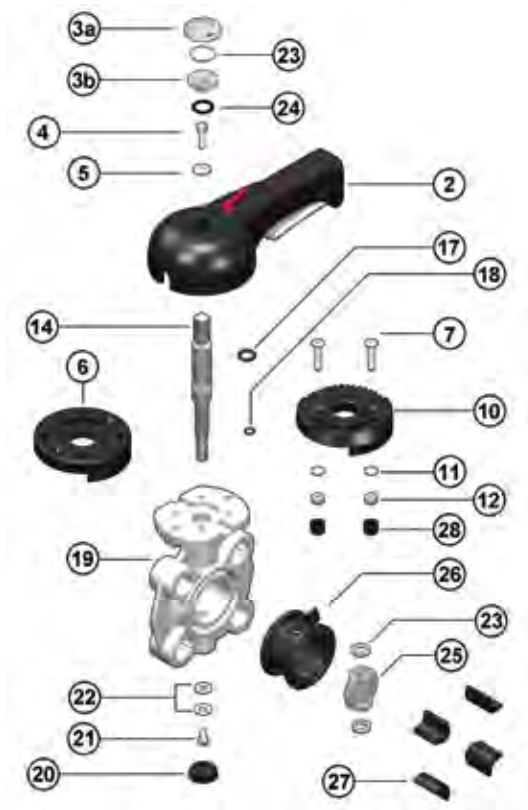


FK DN 40÷50

SPARE PARTS FOR MANUAL VALVES

BUTTERFLY VALVES



Set FK

Sealings Set FK

DN	Position	EPDM Code		FPM Code	
40 ÷ 50	17 - 18 - 23	SETFK063	4,92	SETFK063F	11,46

FK handle set

FK handle set with fixation screw and protection cap

DN	Position	Code	
40 ÷ 50	2 - 3 - 4 - 5	HSFKDOS11	32,62

FK upper flange

FK upper flange (manual version with handle) with fasteners and protection caps

DN	Position	Code	
40 ÷ 50	7 - 10 - 11 - 12 - 28	UFFK160	16,90

FK DN 40÷50

SPARE PARTS FOR MANUAL VALVES

BUTTERFLY VALVES

FK shaft

FK shaft

DN	Position	Code	
40	14	STFK050	50,89
50	14	STFK063	50,89

FK disc

FK disc

DN	Position	PVC-U Code		PP-H Code		PVC-C Code		PVDF Code	
40	25	DISCV050	29,63	DISCM050	36,16	DISCC050	43,36	DISCF050	79,53
50	25	DISCV063	31,36	DISCM063	38,28	DISCC063	45,92	DISCF063	84,21

FK primary liner

FK primary liner

DN	Position	EPDM Code		FPM Code	
40	26	LIN050E	17,81	LIN050F	106,38
50	26	LIN063E	18,81	LIN063F	112,29

FK centering inserts

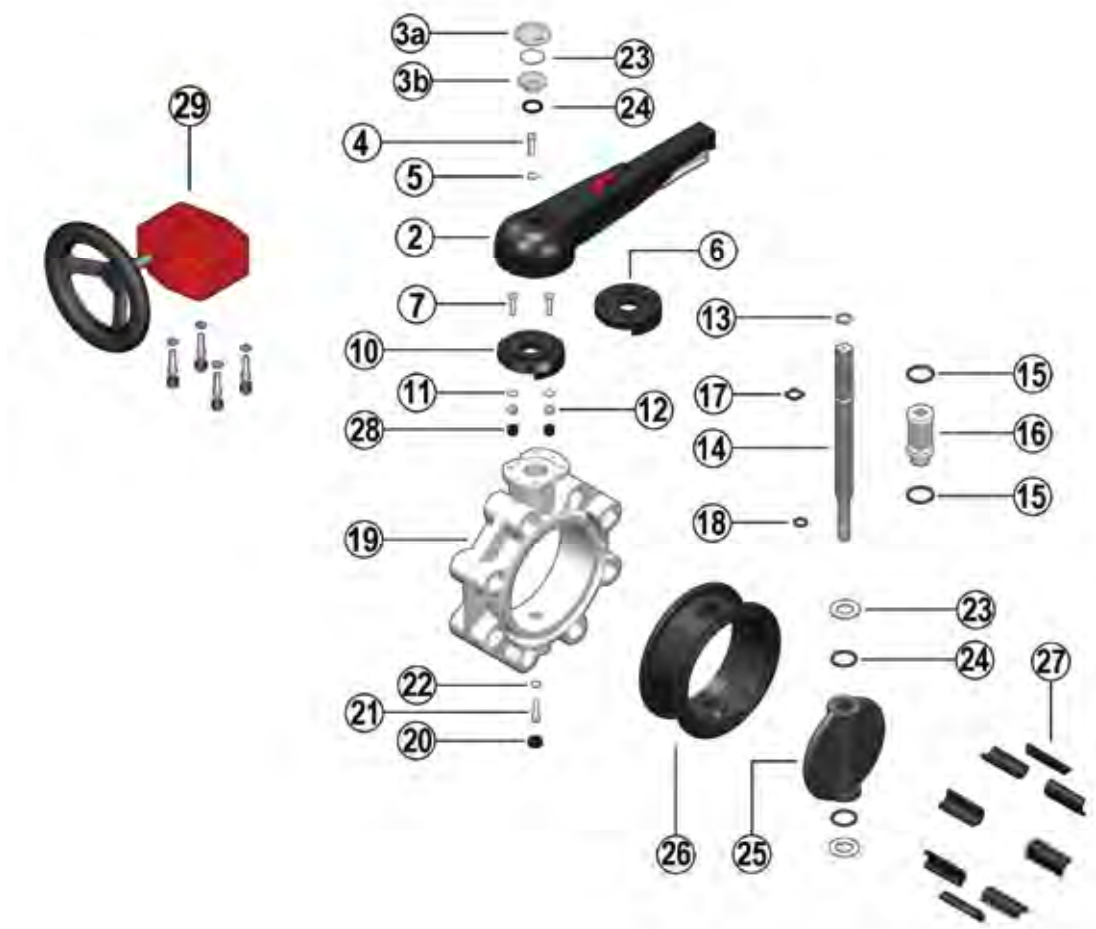
FK centering inserts set

DN	Position	Code	
40	27	ISFK050	27,30
50	27	ISFK063	27,30

FK DN 65÷200

SPARE PARTS FOR MANUAL VALVES

BUTTERFLY VALVES



Set FK
Sealings Set FK

DN	Position	EPDM Code		FPM Code	
65	15 - 17 18 - 23 - 24	SETFK075E	5,46	SETFK075F	12,74
80	15 - 17 18 - 23 - 24	SETFK090E	5,59	SETFK090F	12,74
100	15 - 17 18 - 23 - 24	SETFK110E	5,81	SETFK110F	12,74
125	15 - 17 18 - 23 - 24	SETFK140E	6,37	SETFK140F	13,58
150	15 - 17 18 - 23 - 24	SETFK160E	9,17	SETFK160F	17,01
200	15 - 17 18 - 23 - 24	SETFK225E	14,77	SETFK225F	26,38

FK handle set

FK Handle with fixation screw and Labelling system set

DN	Position	Code	
65	2 - 3 - 4 - 5	HSFKDOS11	32,62
80* - 100*	2 - 3 - 4 - 5	HSFKD0M14	43,08
125* - 150*	2 - 3 - 4 - 5	HSFKD0L17	47,59
200	2 - 3 - 4 - 5	HSFKDXL22	70,25

* For valves supplied before July 2006 it is necessary to order also the upper flange: Code UFFK160

FK DN 65÷200

SPARE PARTS FOR MANUAL VALVES

BUTTERFLY VALVES

FK Gear

FK gear box kit including: gear box, bolts and, if necessary, the square adaptor

DN	Position	Code	
65 ÷ 100	29	GEAR01	229,25
125 - 150	29	GEAR02	229,25
200	29	GEAR03	280,47

"Note: in order to install on FK (d75÷225) it is necessary to use the ""Actuation Adaptor"" (FKADA160, FKADA225), see Accessry Price List EAM"

FK upper flange set

FK upper flange (manual version with handle*) with fasteners and protection caps

DN	Position	Code	
65 ÷ 150	7- 10 - 11 - 12 - 28	UFFK160	16,90
200	7- 10 - 11 - 12 - 28	UFFK225	25,69

* for valves supplied after July 2006

FK Shaft

FK Shaft

DN	Position	Code	
65	14	STFK075	62,05
80	14	STFK090	74,45
100	14	STFK110	86,86
125	14	STFK140	99,27
150	14	STFK160	124,10
200	14	STFK225	210,96

FK DN 65÷200

SPARE PARTS FOR MANUAL VALVES

BUTTERFLY VALVES

FK disc

FK Disc

DN	Position	PVC-U Code		PP-H Code		PVC-C Code		PVDF Code	
65	25	DISCV075	34,85	DISCM075	42,55	DISCC075	51,01	DISCF075	93,56
80	25	DISCV090	41,01	DISCM090	49,34	DISCC090	59,56	DISCF090	98,58
100	25	DISCV110	53,40	DISCM110	58,66	DISCC110	66,34	DISCF110	105,45
125	25	DISCV140	70,04	DISCM140	77,05	DISCC140	80,64	DISCF140	137,71
150	25	DISCV160	89,63	DISCM160	90,13	DISCC160	94,89	DISCF160	147,92
200	25	DISCV225	124,14	DISCM225	136,73	DISCC225	143,03	DISCF225	187,06

FK Primary Liner

FK Primary Liner

DN	Position	EPDM Code		FPM Code		NBR Code	
65	26	LIN075E	19,81	LIN075F	118,19	LIN075N	21,78
80	26	LIN090E	21,82	LIN090F	147,92	LIN090N	24,02
100	26	LIN110E	26,61	LIN110F	213,43	LIN110N	29,25
125	26	LIN140E	36,11	LIN140F	302,66	LIN140N	39,74
150	26	LIN160E	40,03	LIN160F	389,41	LIN160N	44,02
200	26	LIN225E	70,54	LIN225F	681,85	LIN225N	77,61

FK centering inserts

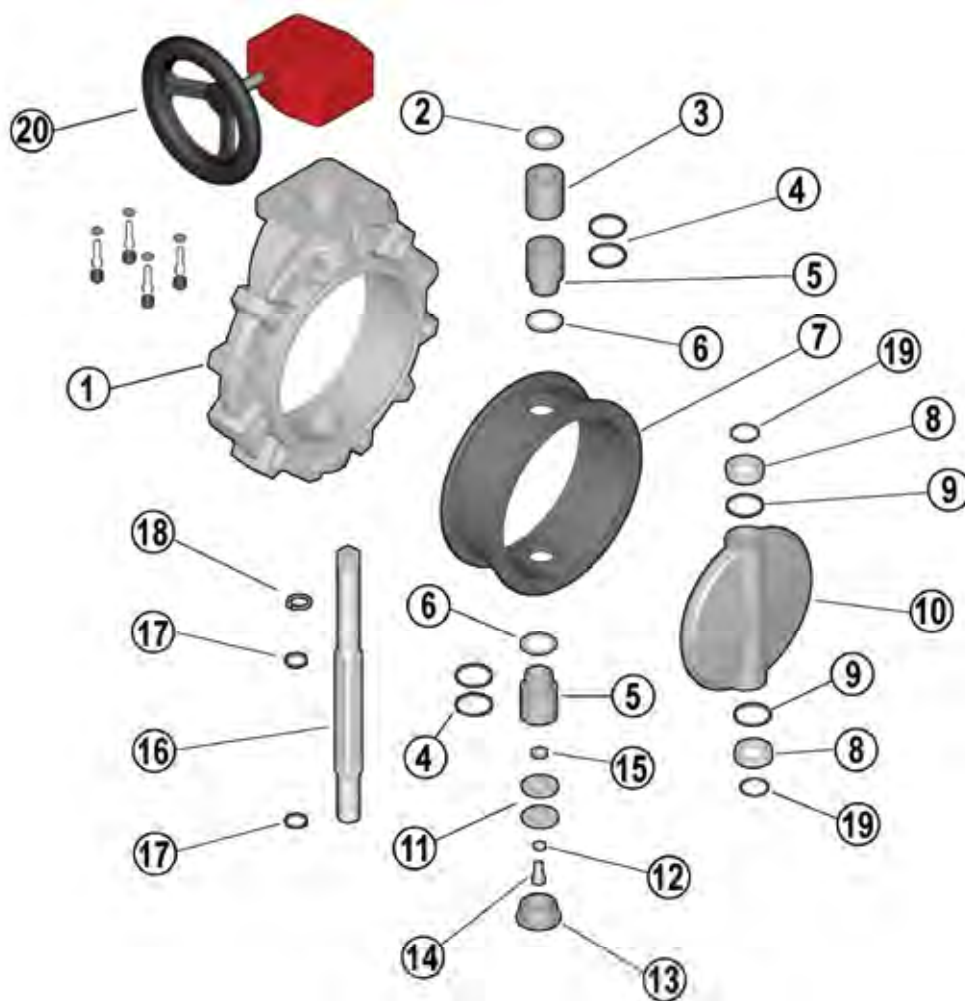
FK centering inserts set

DN	Position	Code	
65	27	ISFK075	32,04
80	27	ISFK090	36,86
100	27	ISFK110	40,06
125	27	ISFK140	43,27
150	27	ISFK160	44,86
200	27	ISFK225	48,06

FK DN 250÷300

SPARE PARTS FOR MANUAL VALVES

BUTTERFLY VALVES



Set FK

Sealings Set FK

DN	Position	EPDM Code		FPM Code	
250	4 - 6 - 9 - 17 - 19	SETFK315E	46,88	SETFK315F	83,95
300	4 - 6 - 9 - 17 - 19	SETFK315E	46,88	SETFK315F	83,95

FK gear

Assembly kit composed by: Manual override with gear box, fasteners and square reduction (where needed)

DN	Position	Code	
250 ÷ 300	20	GEAR04	327,53

FK DN 250÷300

SPARE PARTS FOR MANUAL VALVES

BUTTERFLY VALVES

FK Shaft

FK Shaft

DN	Position	Code	
250	16	(*) STFK280	322,65
300	16	(*) STFK315	372,30

(*) for valves with PVDF disc please use the shafts Codes STFK280F and STFK315F

FK disc

FK disc

DN	Position	PVC-U Code		PP-H Code		PVC-C Code		PVDF Code	
250	10	DISCV280	240,01	DISCM280	271,52	DISCC280	288,28	DISCF280	335,89
300	10	DISCV315	261,70	DISCM315	297,04	DISCC315	314,19	DISCF315	366,67

FK Primary Liner

FK Primary Liner

DN	Posizione	EPDM Code		FPM Code	
250	7	LIN280E	149,76	LIN280F	979,63
300	7	LIN315E	163,04	LIN315F	1.200,77